



# SRINIVASAM RESIDENCY

RERA Regn. No.: P00300000450

THE ULTIMATE  
LIVING EXPERIENCE

A project from





## REDEFINING LIVING SPACE

MHB Constructions a well known name in the real estate sector and during all these years they had gathered more than 20 years of valuable experience. With its experience, principles and innovative architectural approach, it is bringing an extra ordinary residential project under the name, Srinivasam Residency.

Srinivasam Residency a 1545 Sq. Yd. project placed in the premium location of Warangal, is the address have always aspired of.

Nestled amongst green landscapes Srinivasam Residency offers 3 & 2 BHK apartments that offer a quality living you have always dreamt of. Where each apartment has been efficiently designed to maximize space & sunlight while ensuring a superb community living experience.



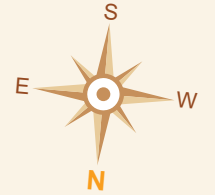
## PROJECT HIGHLIGHTS

- Premium Quality Construction
- Prime Residential Area
- High-end Architecture
- Ample Landscaping
- Contemporary Elevation Design
- Botique project with 5 floors & 20 flats
- No common walls
- Children Play Area
- 100% Vaastu Compliance
- Ample Car Parking
- Water Softener
- 24/7 security under CC cameras
- DG Backup

# TYPICAL FLOOR PLAN

# AREA STATEMENT

FLAT	101	102	103	104
BHK	3 BHK	2 BHK	2 BHK	3 BHK
AREA IN SFT.	1690	1180	1180	1680



# INSPIRED LIVING INDOORS & OUT

Privacy and a lavish use of space are at the foundation of planning homes with individuality. Within our five floor building there are only four luxury apartments per floor. By designing ample open spaces and warm natural light floods the interiors, and breathes life into your living room with maximum ventilation. Widely spaced windows delightfully let the outdoors in and enhance the views. There's a palette of fine features and finishes proving that a true professional was behind planning every feature you see around you.





**FLAT NO. 101**

3 BHK - EAST FACING

Super Builtup Area - 1690 SFT



**FLAT NO. 102 & 103**

2 BHK - NORTH FACING

Super Builtup Area - 1180 SFT





### FLAT NO. 104

3 BHK - WEST FACING

Super Builtup Area - 1680 SFT



## SPECIFICATIONS

### FOUNDATION & STRUCTURE

Earthquake Resistant R.C.C. Framed Structure.

### SUPER STRUCTURE

9" External wall  
4" Internal wall

### FINISHES

**Internal:** Smooth plastered surface treated with lappam / putty and painted with acrylic emulsion over a coat of primer.

**External:** Two coats of cement plastering with two coats of Birla putty or texture.

**Common Area:** Smooth plastered surface treated with lappam / putty and painted with emulsion and false ceiling with cove lighting in lobby's at required areas.

### DOORS & WINDOWS

**Main Door:** Teak wood frame & shutter aesthetically designed with melamine polish fitted with good quality hardware and locking system of reputed make.

**Other Doors:** Internal doors with Teak wood frames & shutters of good quality flush doors and laminates. Good quality hardware & locking system.

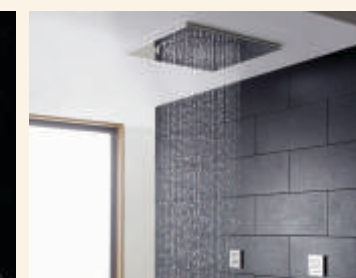
**Balcony Doors:** UPVC sliding shutter with float glass panels.

**Windows:** UPVC sliding frames with floated glass.

**Grills:** MS safety grills for windows aesthetically designed.

### TOILETS

Wash basin with Cera / Hindware or equivalent make. Wall mounted EWC with flush tank. Hot and cold water with diverter & shower. Provision for geyser and exhaust fan in all bathrooms. All CP fittings of Jaquar or equivalent make.



### FLOORING

**Hall, Bedrooms & Kitchen:** Vitrified 2 x 2' tiles of Somany / Kajaria / Asian or equivalent make.

**Toilet:** Antiskid mat finish ceramic tiles.

### TILE DADOING

**Kitchen:** Glazed ceramic tile dado upto 2' height above kitchen platform.

**Toilet:** Glazed first class ceramic tile dado upto door height.

**Utility / Wash:** Good quality ceramic tile dado upto 3' height.

### KITCHEN

Granite platform with Frankie / Equivalent stainless steel sink and provision for aqua guard water purifier.

### COMMUNICATION

Provision for telephone points in drawing area. Provision for internet & cable connection in drawing area.

### GENERATOR

Back-up generator for common areas & lift. 7 points in two bedroom flat & 9 points in three bedroom flat.

### LIFTS

8 passengers lift of LEGEND / ELEV8R or equivalent make.

### PARKING

Covered parking space

### SITOUT

Greenery / Landscape.

### ELECTRICAL

Concealed copper wiring of Finolex / Polycab or equivalent make. Modular switches / sockets will be of Anchor / Legrand / Havells or equivalent make. Air conditioner points in all bedrooms, geyser points in all toilets. Plug points for cooking range, Chimneys, Refrigerator Microwave Oven / Mixer / Grinder in kitchen.

### WATER

Municipal and Bore well water.

# COMPLETED PROJECTS



## LOCATION MAP

(Not to scale)

## PRIVILEGED LOCATION

Placed in the premium location of Warangal, Srinivasam Residency brings to you a home where you can connect with yourself and family. Built to give a real home experience with great connectivity, not only connects you with your dear ones but also eases your daily routine.



**SRINIVASAM**  
RESIDENCY

RERA Regn. No.: P00300000450

A project from



Member:

**CREDAI**  
Confederation of Real Estate  
Developers' Associations of India



Contact: **M Hari Babu - 9121205757**

**OFFICE:** H.No # 11 - 25 - 35 & 36, Flat #404, ANR Vaishnavi Enclave  
Vasavi Colony, Warangal - 506002

**SITE:** Sy No: 236, Deshaipet Road, MV Colony, Warangal - 506002

mhbconstructions@gmail.com | [www.mhbconstructions.com](http://www.mhbconstructions.com)

Note: The brochure is only conceptual presentation of the project and not a legal offering. The promoters reserve the right to alter and make changes in elevation, specifications and plans as deemed fit.